

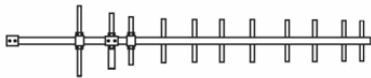
BY300-12G

UHF Low 350 MHz Ten element Yagi Antenna

BY300-7G is a 10 element Yagi antenna with 12 dBd Gain.

- Low Loss and Wideband Gamma match.
- Radiating elements, supporting booms and adjoining metal castings are constructed in high quality aluminum to prevent corrosion.

ELECTRICAL SPECIFICATIONS



| | |
|-----------------------|--|
| ANTENNA TYPE | 10-element Yagi Antenna |
| FREQUENCY | BY300: 280- 330MHz BY360: 330- 380MHz |
| BANDWIDTH | 50 MHz |
| IMPEDANCE | 50 Ohm |
| VSWR | <1.5:1 |
| POLARISATION | Linear (Vertical or Horizontal) |
| GAIN | 12 dBd, 14.15 dBi |
| Front to Back Ratio | > 20 dB |
| MAX. INPUT POWER | 150 Watt |
| ANTISTATIC PROTECTION | Direct ground |

MECHANICAL SPECIFICATIONS

| | |
|---------------------|--|
| Color | Silvery white |
| Dimensions | BY300: 2300 × 525 mm BY360: 2105 × 420 mm |
| Weight | 3.8 kg |
| Mount Type | Fixed tube mounting bracket (included) |
| Mounting Place | On tube (Ø 20 - 65 mm, vertical or horizontal) |
| Survival Wind Speed | 55 m/s |
| Connector | Type N-female |
| Pigtail | Approx. 0.5 m RG213/U |
| Serial Number | On product label |

ORDERING INFORMATION

| | |
|-----------|-------------------------|
| BY300-12G | 280 - 330 MHz In Box |
| BY360-12G | 330 - 380 MHz In Box |