

# HC150-2 VHF TX Combiner

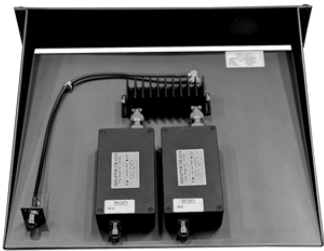
## Hybrid 2 channel VHF TX Combiner

HC150-2 series is a VHF TX hybrid combiner with single or dual isolators with built-in low pass filter used for combining 2 VHF transmitters into one antenna with close frequency spacing.

- Standard EIA 19" tray, 400 mm depth. (2HU)
- Built-in low pass filter
- No tuning required. Full bandwidth.

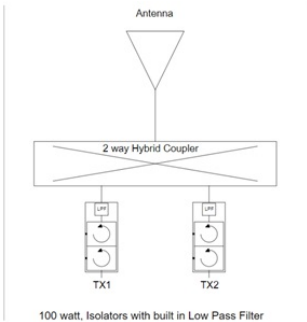
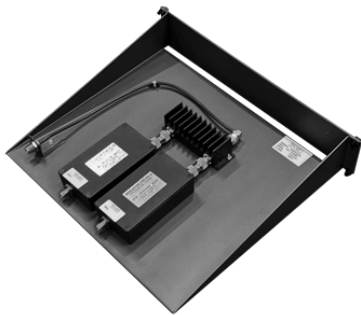
## ELECTRICAL SPECIFICATIONS

Type	VHF Hybrid TX Combiner - 2 Channels
Frequency	144 - 175 MHz
VSWR	≤ 1.5:1
Impedance	50 Ohm
Max. Input Power	100 Watts (Per channel)
Insertion Loss	Single Isolator: < 4.0 dB Dual Isolator: < 4.8 dB
Isolation TX - TX	Single Isolator: > 50 dB Dual Isolator: > 70 dB



## MECHANICAL SPECIFICATIONS

Color	Black grey (RAL7021)
Dimension	485 x 89 x 400 mm (W x H x L)
Weight	HC150-2S: 3.8 kg HC150-2D: 4.6 kg
Connector	Type N-female
Serial no.	On product label
Operating temperature	-20° to +60°C



## ORDERING INFORMATION

55127-003	HC150-2S 144-175 MHZ 2CH x 100 W Single Isolator 2HU
55127-103	HC150-2D 144-175 MHZ 2CH x 100 W Dual Isolator 2HU