

# CABLE FEED THROUGH (Ø 10 - 12 MM)

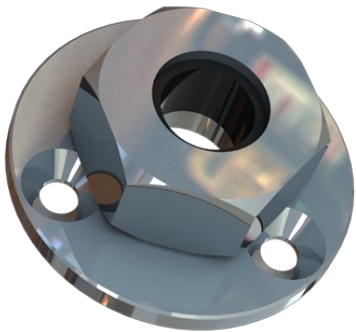
Cable Feed Through (for cable Ø 10 - 12 mm)

- Water-proof Cable Feed-through for deck and wall mounting
- For cable Ø 10-12 mm (RG213 a.o.)
- Chromed plated solid brass

## ELECTRICAL SPECIFICATIONS

## MECHANICAL SPECIFICATIONS

Color	Chrome
Height	14.5 mm
Weight	55 g
Diameter	Ø 38 mm
Mounting place	On deck and wall (No mounting hardware supplied!)
Materials	Chromed solid brass and rubber



## ORDERING INFORMATION

P/N	10000-481B (individually packing in Polybag)
-----	--

## PACKAGING INFORMATION

Type	Bulk packing or individually packing in Polybag or Carton box (See "ORDERING INFORMATION")
weight	Approx. 75 g

# Datasheet

2 / 2

