

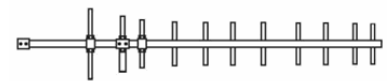
BY300-12G

UHF Low 350 MHz Ten element Yagi Antenna

BY300-7G is a 10 element Yagi antenna with 12 dBd Gain.

- Low Loss and Wideband Gamma match.
- Radiating elements, supporting booms and adjoining metal castings are constructed in high quality aluminum to prevent corrosion.

ELECTRICAL SPECIFICATIONS



ANTENNA TYPE	10-element Yagi Antenna
FREQUENCY	BY300: 280- 330MHz BY360: 330- 380MHz
BANDWIDTH	50 MHz
IMPEDANCE	50 Ohm
VSWR	<1.5:1
POLARISATION	Linear (Vertical or Horizontal)
GAIN	12 dBd, 14.15 dBi
Front to Back Ratio	> 20 dB
MAX. INPUT POWER	150 Watt
ANTISTATIC PROTECTION	Direct ground

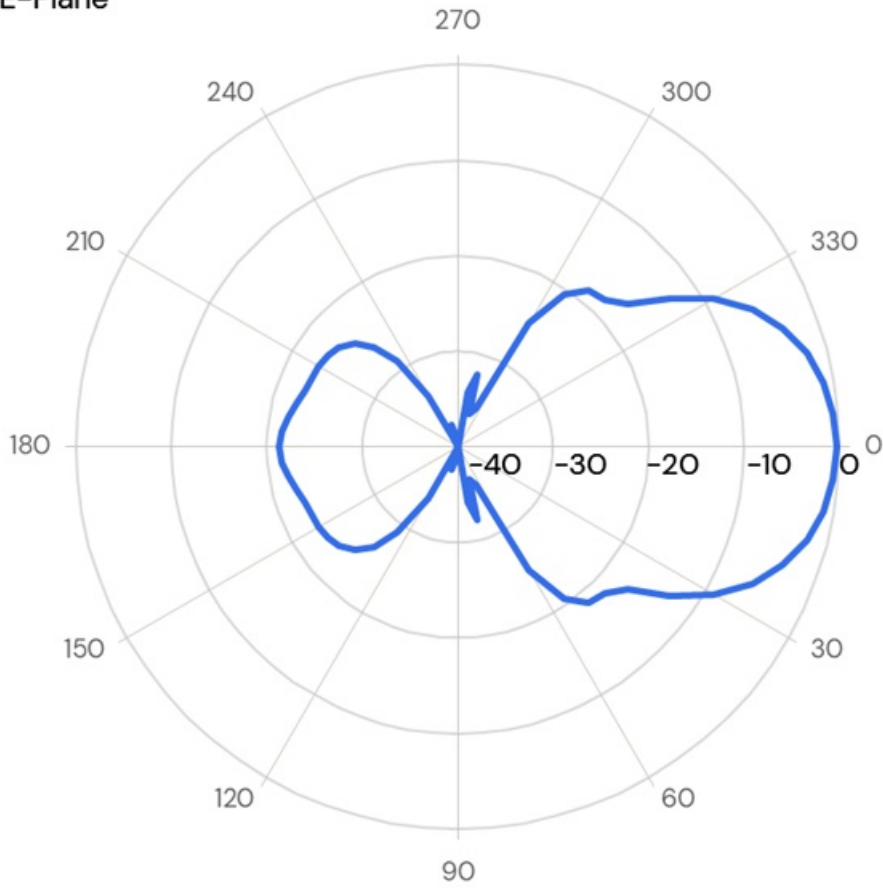
MECHANICAL SPECIFICATIONS

Color	Silvery white
Dimensions	BY300: 2300 × 525 mm BY360: 2105 × 420 mm
Weight	3.8 kg
Mount Type	Fixed tube mounting bracket (included)
Mounting Place	On tube (Ø 20 - 65 mm, vertical or horizontal)
Survival Wind Speed	55 m/s
Connector	Type N-female
Pigtail	Approx. 0.5 m RG213/U
Serial Number	On product label

ORDERING INFORMATION

BY300-12G	280 - 330 MHz In Box
BY360-12G	330 - 380 MHz In Box

E-Plane



H-Plane

