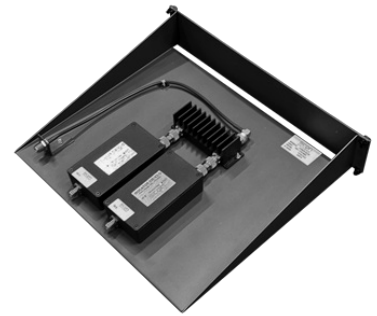


HC450-2 UHF TX Combiner

Hybrid 2 channel UHF TX Combiner

HC450-2 series is a UHF TX hybrid combiner with single or dual isolators used for combining 2 UHF transmitters into one antenna with close frequency spacing.

- Standard EIA 19" tray, 400 mm depth (2HU).
- Built-in low pass filter.

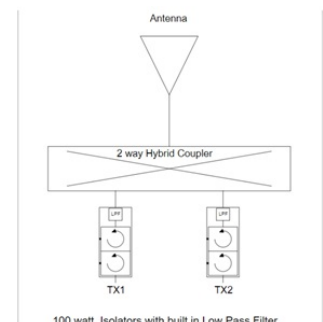


ELECTRICAL SPECIFICATIONS

Type	UHF Hybrid Combiner - 2 Channels
Frequency	T: 380 - 420 MHz L: 400- 440 MHz H: 440 - 475 MHz
VSWR	≤ 1.5:1
Impedance	50 Ohm
Max. Input Power	100 Watts (Per channel)
Insertion Loss	Single Isolator: < 4.0 dB Dual Isolator: < 4.5 dB
Isolation TX - TX	Single Isolator: > 50 dB Dual Isolator: > 70 dB

MECHANICAL SPECIFICATIONS

Color	Black Grey (RAL7021)
Dimension	482.6 x 89.0 x 400 mm (W x H x L)
Weight	HC450-2S: 3.1 kg HC450-2D: 3.5 kg
Connector	Type N-female
Serial no.	On product label
Operating temperature	-20° to +60°C



ORDERING INFORMATION

55427-003T	HC450-2ST 380-420 MHZ 2CH x 100 W Single Isolator 2HU
55427-103T	HC450-2DT 380-420 MHZ 2CH x 100 W Dual Isolator 2HU
55427-003L	HC450-2SL 400-440 MHZ 2CH x 100 W Single Isolator 2HU
55427-103L	HC450-2DL 400-440 MHZ 2CH x 100 W Dual Isolator 2HU
55427-003H	HC450-2SH 440-475 MHZ 2CH x 100 W Single Isolator 2HU
55427-103H	HC450-2DH 440-475 MHZ 2CH x 100 W Dual Isolator 2HU