

## Datasheet

1 / 2

# HC450-4 UHF TX Combiner

## Hybrid 4 channel UHF TX Combiner

HC450-4 series is a UHF TX hybrid combiner with single or dual isolators used for combining 4 UHF transmitters into one antenna with close frequency spacing.

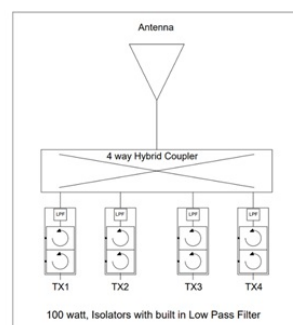
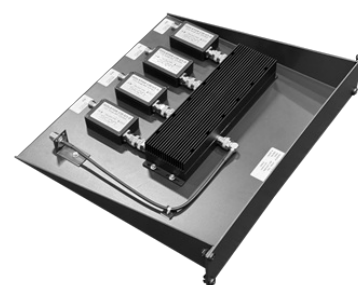
- Standard EIA 19" tray, 400 mm depth (2HU).
- Built-in low pass filter.

## ELECTRICAL SPECIFICATIONS

Type	UHF Hybrid Combiner - 4 Channels
Frequency	T: 380 - 420 MHz L: 400- 440 MHz H: 440 - 475 MHz
VSWR	≤ 1.5:1
Impedance	50 Ohm
Max. Input Power	100 Watts (Per channel)
Insertion Loss	Single Isolator: < 7.2 dB Dual Isolator: < 7.7 dB
Isolation TX - TX	Single Isolator: > 50 dB Dual Isolator: > 70 dB

## MECHANICAL SPECIFICATIONS

Color	Black gray (RAL7021)
Dimension	482.6 x 89.0 x 400 mm (W x H x L)
Weight	HC450-4S: 5.6 kg HC450-4D: 6.4 kg
Connector	Type N-female
Serial no.	On product label
Operating temperature	-20° to +60°C



ORDERING INFORMATION

55447-003T	HC450-4ST 380-420 MHZ 4CH x 100 W Single Isolator 2HU
55447-103T	HC450-4DT 380-420 MHZ 4CH x 100 W Dual Isolator 2HU
55447-003L	HC450-4SL 400-440 MHZ 4CH x 100 W Single Isolator 2HU
55447-103L	HC450-4DL 400-440 MHZ 4CH x 100 W Dual Isolator 2HU
55447-003H	HC450-4SH 440-475 MHZ 4CH x 100 W Single Isolator 2HU
55447-103H	HC450-4DH 440-475 MHZ 4CH x 100 W Dual Isolator 2HU