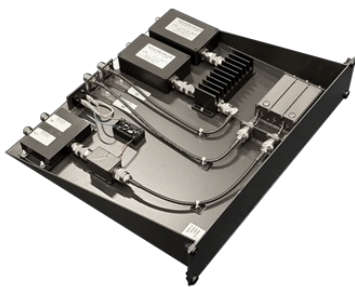


HCMR450-2

2CH UHF 400-475 MHz Hybrid Combiner

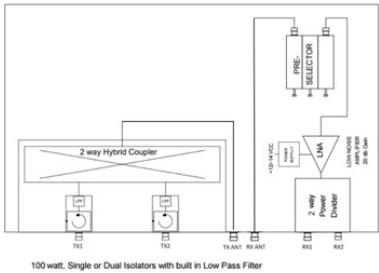
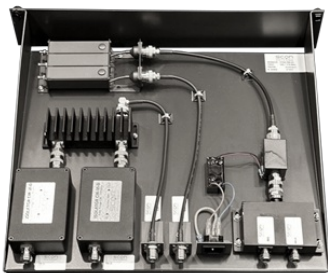
HCMR450-2 series is a combined UHF TX/RX hybrid combiner with single or dual isolators used with two antennas, one RX and one TX or to be used with external duplex filter.

- Standard EIA 19" tray, (2HU).
- Tuned to customer specified frequencies.
- Built-in low pass filter.
- Max power 100W as standard.



ELECTRICAL SPECIFICATIONS

Type	UHF TX/RX Hybrid Combiner - 2 Channels
Frequency	T: 380 - 420 MHz L: 400 - 440 MHz H: 440 - 475 MHz
VSWR	≤ 1.5:1
Impedance	50 Ohm
Max. Input Power	100 Watts (per channel)
Insertion Loss (TX)	Single isolator: < 4.1 dB Dual isolator: < 4.4 dB
Isolation TX - TX	Single isolator: > 50 dB Dual isolator: > 70 dB
Isolation RX-RX	>20 dB
Bandwidth (RX)	Approx. 5 MHz (Adjustable in band)
Gain	RX: 20±1.0 dB
LNA Noise Figure	< 2.0 dB
Power Supply	100-240 V; 50/60 Hz (Max. 7W)



Datasheet

MECHANICAL SPECIFICATIONS

Color	Black gray (RAL7021)
Dimension	482.6 x 89 x 400 mm (W x H x L)
Weight	HCMR450-2S: 4.2 kg HCMR450-2D: 4.6 kg
Connector	Type N-female
Serial no.	On product label
Operating temperature	-20° to +60°C

ORDERING INFORMATION

55420-003T	HCMR450-2ST 380-420 MHZ 2CH x 100 W Single Isolator
55420-103T	HCMR450-2DT 380-420 MHZ 2CH x 100 W Dual Isolator
55420-003L	HCMR450-2SL 400-440 MHZ 2CH x 100 W Single Isolator
55420-103H	HCMR450-2DL 400-440 MHZ 2CH x 100 W Dual Isolator
55420-003H	HCMR450-2SH 440-475 MHZ 2CH x 100 W Single Isolator
55420-103H	HCMR450-2DH 440-475 MHZ 2CH x 100 W Dual Isolator
Note	Power cable is not included