

BY2-10G

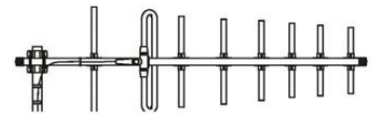
VHF 150 MHz Eight element Yagi Antenna

BY2-8G is a 8 element Yagi antenna with 10 dBd Gain.

- The entire balun unit and feeder cable inlet are completely sealed in a Polypropylen (PP) moulding ensuring permanent waterproof connections.
- Radiating elements, supporting booms and adjoining metal castings are constructed in high quality aluminum to prevent corrosion.

ELECTRICAL SPECIFICATIONS

Antenna Type	8-element Yagi Antenna,
Frequency	L: 144 - 160 MHz M: 153 - 167 MHz H: 160- 175 MHz
Bandwidth	L: 16 MHz M: 14 MHz H: 15 MHz
Impedance	50 Ohm
VSWR	<1.5:1
Polarisation	Linear (Vertical or Horizontal)
Gain	10 dBd, 12.15 dBi
Half-Power Beamwidth	E-Plane: 44° H-Plane: 48°
Front-To-Back Ratio	> 18 dB
Max. Input Power	150 Watt
Antistatic Protection	Direct Ground



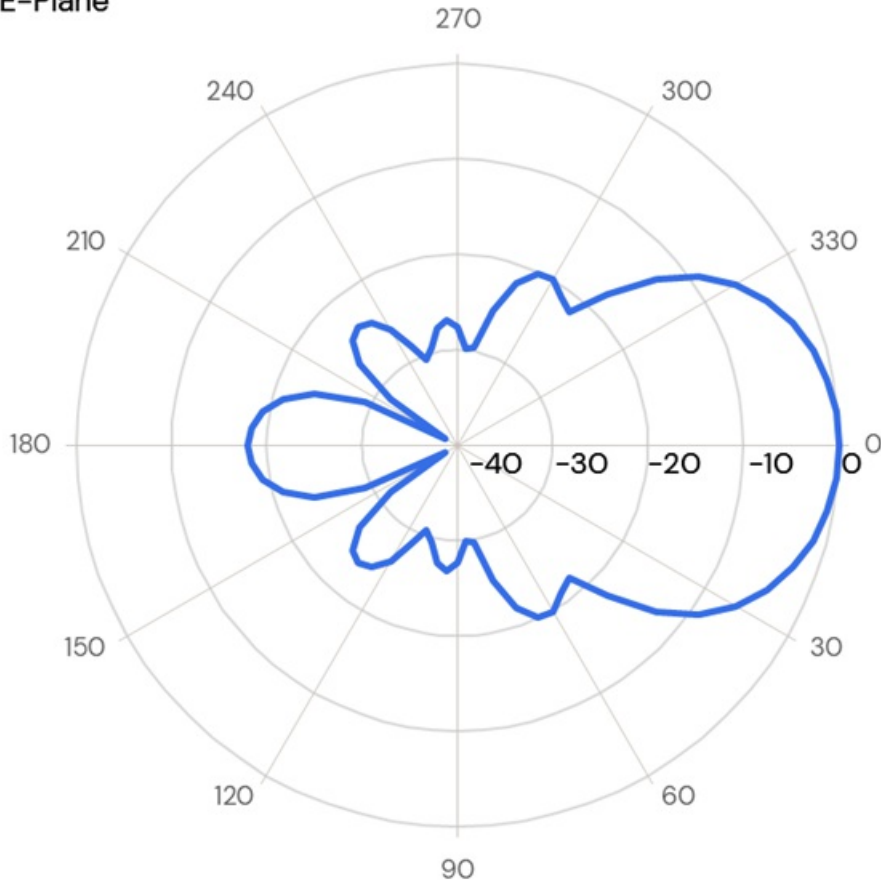
MECHANICAL SPECIFICATIONS

Color	Silvery white
Dimensions	L: 2828 x 1040 mm M: 3270 x 960 H: 2990 x 880
Weight	5.0 kg
Mount Type	Fixed Tube Bracket in Galvanized Iron (included - P05/01)
Mounting Place	On Tube (Ø 20 - 65 mm, vertical or horizontal)
Survival Wind Speed	55 m/s
Materials	Aluminum 6063-T5, PP and Brass
Connector	Type N-female
Pigtail	Approx. 2.5 m RG213/U
Serial Number	On product label

ORDERING INFORMATION

BY2-10GL	144 - 160 MHz In Box
BY2-10GM	153 - 167 MHz In Box
BY2-10GH	160 - 175 MHz In Box

E-Plane



H-Plane

