

BY500-12G

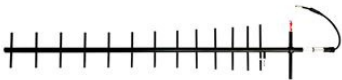
UHF 500 MHz Fourteen element Yagi Antenna

BY500-12G is a 14 element Yagi antenna with 12 dBd Gain.

- Low Loss and Wideband Gamma match.
- Radiating elements, supporting booms and adjoining metal castings are constructed in high quality aluminum to prevent corrosion.
- Television Broadcast channel bands: 21 - 29

ELECTRICAL SPECIFICATIONS

Antenna Type	14-element Yagi Antenna
Frequency	460 - 535 MHz
Bandwidth	75 MHz
Impedance	50 Ohm
VSWR	<1.5:1
Polarisation	Linear (Vertical or Horizontal)
Gain	12 dBd, 14.15 dBi
Half-Power Beamwidth	E-Plane: 46° H-Plane: 54°
Front-To-Back Ratio	> 20 dB
Max. Input Power	150 Watt



Datasheet

MECHANICAL SPECIFICATIONS

Color	Black Grey (RAL7021)
Dimensions	1950 x 355 mm
Weight	3.0 kg
Mount Type	Fixed Tube Bracket in Galvanized Iron (included)
Mounting Place	On tube (Ø 20 - 65 mm, vertical or horisontal)
Survival Wind Speed	55 m/s
Materials	Aluminum 6063-T5, PP and Brass
Connector	Type N-female
Pigtail	Approx. 0.5 m RG213/U
Serial Number	On product label

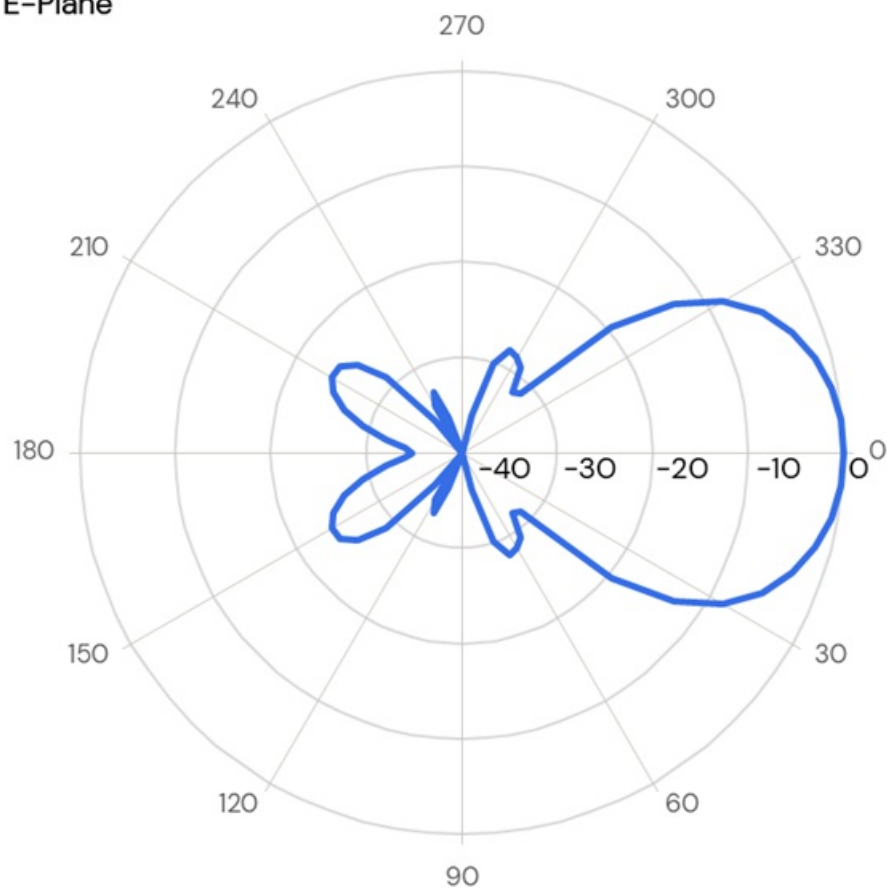
ORDERING INFORMATION

BY500-12G	460 - 535 MHz In Box
-----------	-------------------------

Datasheet

3 / 4

E-Plane



Datasheet

4 / 4

H-Plane

