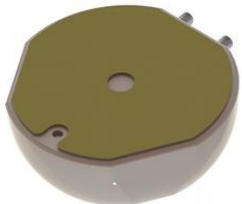


Thuraya Passive Omni. (GPS)

Low-profile magnetic and adhesive tape mounted antenna for Fleet-management use

The Scan Antenna 60405 is a passive antenna for Thuraya Docking stations. It is compatible with SO, SG and XT handsets, the SM-2500 module, Thuraya T2M and more. It requires no pointing towards satellite and the rugged design ensures a reliable performance in harsh conditions. The radome has a smooth surface and low loss properties

- Built-in filtered passive GPS antenna
- Dual-band SAT/GPS antenna design
- Made for magnetic mounting on vehicle roofs (steel) and adhesive mounting on any surface



ELECTRICAL SPECIFICATIONS

Frequency	1525 - 1660.5 MHz
Impedance	50 ohm
Satellite System	Thuraya, GPS
Polarisation	LHCP (SAT)
Axial ratio	< 6 dB
Gain	4 dBic

Datasheet

2 / 3

MECHANICAL SPECIFICATIONS

Color	White
Weight	170 g
Diameter	Ø 111 mm
Mounting	Magnetic or with supplied adhesive tape
Mounting Place	On steel roof etc
Mounting Instruction	Included
Height above roof	36.5 mm
Materials	ASA, PCB, brass and PTFE
Operating Temperature	-40°C to +70°C
Connector 1	SAT: SMA-female (Black coding)
Connector 2	GPS: SMA-female (Blue coding)
Ingress protection	IP66

ORDERING INFORMATION

60405-001	Antenna only - no cables supplied
-----------	-----------------------------------

PACKAGING INFORMATION

Type	Bag
Weight	Approx. 200 g

Datasheet

3 / 3

