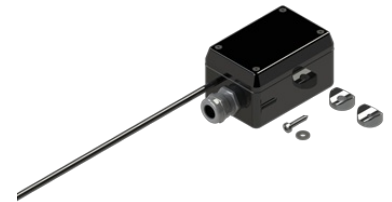


HF Connection Box

Connection Box for HF Antenna Series

- Passive Connection Box for HF Antenna Series
 - For TX/RX (Version A and C) and RX (Version B and D) operation
- Version A and B:
 - HF500, HF501, HF600, HF601, HF6000, HF6001, HF700, HF701, HF7000 and HF7001
- Version B and C:
 - HF850, HF8000, HF8001, HF9000 and HF9001
- Rugged design



ELECTRICAL SPECIFICATIONS

Type	Connection Box for HF Series Antennas
Frequency	1.4-30 MHz (A/C), 0.15-30 MHz (B/D)
Max. Power Input	See Antenna Specification

MECHANICAL SPECIFICATIONS

Color	Black
Dimensions	115 x 60 x 50 mm
Weight	Approx. 230 g
Mounting	Bolt on
Materials	PC, PCB, PTFE, copper and chromed brass
Operating temperature	-55C to +70C (IEC 60068-2-1, IEC 60068-2-2)
Serial no.	On product label

ORDERING INFORMATION

13299-003A	CONNECTION-BOX TX/RX (SMALL)
13299-003B	CONNECTION-BOX RX (SMALL)
13299-003C	CONNECTION-BOX TX/RX (LARGE)
13299-003D	CONNECTION-BOX RX (LARGE)

PACKAGING INFORMATION

Type	Carton box
Size	205 x 105 x 75 mm

