

# Thuraya Passive Omnidirectional SATCOM Antenna

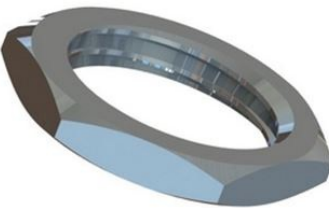
Compact passive dual-band antenna - Rugged design

- Passive Antenna for Thuraya terminals
- Requires no pointing towards satellite
- Rugged design for reliable performance in harsh conditions
- Compact dual-band antenna design
- Smooth surface low loss radome
- Built-in active GPS antenna
- Mounts on any US-style Mounting Bracket with 1"-14NF threaded stud

Note: Cable loss below 3 dB is recommended.

## ELECTRICAL SPECIFICATIONS

Frequency	1525 - 1660.5 MHz, 1575.42 MHz
Impedance	50 ohm
Satellite System	Thuraya, GPS
Polarisation	LHCP (SAT)
Axial ratio	< 6 dB
Gain	2 dBic
LNA Gain	25 dB (GPS)
Noise Figure	1.2 dB (GPS)
Supply voltage	3.0 - 5.5 V DC (GPS)
Current consumption, average	20 mA



## Datasheet

2 / 3

## MECHANICAL SPECIFICATIONS

Color	Glossy White
Height	111 mm
Weight	300 g
Diameter	Ø 94 mm
Mounting	On all US-style Mounting Brackets with 1"-14NF threaded stud
Mounting Place	On marine vessel or landbased vehicle
Mounting Instruction	Use the supplied counter-nut when mounting the antenna
Materials	ASA, POM, PCB and Chrome plated brass
Operating Temperature	-40°C to +70°C
Connector	SAT: TNC-female
Connector2	GPS: SMA-female
Ingress protection	IP66
Cable	Not included
Vibration	IEC60945

## ORDERING INFORMATION

60805-003	Antenna only - no cables supplied
-----------	-----------------------------------

## PACKAGING INFORMATION

Type	Hardbox
size	99 x 95 x 150 mm
weight	Approx. 350 g

## Datasheet

3 / 3

