

MAST/RAIL MOUNT HD G1"-11

PU-painted solid brass heavy duty pole bracket

- Heavy duty bracket for installation of Marine and Base Station Antennas on vertical or horizontal pole
- Made from PU powder coated solid brass for long term use at sea
- Mounting vertically overhead or on side of poles Ø 38 - 75 mm or horizontally on side beams Ø 30 - 75 mm. Optionally mounting on wall with screws (not supplied)
- For all antennas with the 1" Revolving Nut Mounting System base
- Stainless steel hardware included



MECHANICAL SPECIFICATIONS

Color	White
Weight	1500 g (Hardware included)
Mounting	On pole with supplied U-bolts
Mounting place	On vertical or horizontal pole or rail (optionally on wall)
Mounting Instruction	NOTE! 1" Revolving Nut Kit 10000-431 is not included!
Materials	PU-painted solid brass and stainless steel
For Antenna Types	All Marine and Base Station Antennas with the 1" Revolving Nut Mounting System
Dimension	175 x 103 x 66 mm

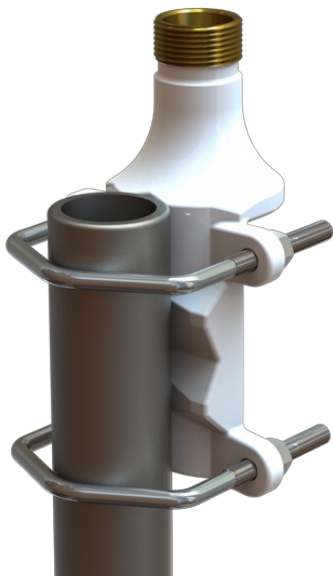


ORDERING INFORMATION

10000-133	Individually packing in Carton box
-----------	------------------------------------

PACKAGING INFORMATION

Type	Bulk packing or individually packing in Polybag or Carton box (See "ORDERING INFORMATION")
size	205 x 105 x 75 mm
weight	1.55 kg





Datasheet

3 / 3

