

1" ADAPTER TUBE HD (150 MM)

Bright Chrome Plated Solid Brass HD Adapter Tube

- Bright chromed solid brass adapter tube for converting US-style 1"-14NF threaded brackets into Standard G1"-11 threaded type
- The adapter tube makes it possible to place all antennas with 1" Revolving Nut mounting on any US-style bracket with 1"-14NF threaded stud

ELECTRICAL SPECIFICATIONS

MECHANICAL SPECIFICATIONS

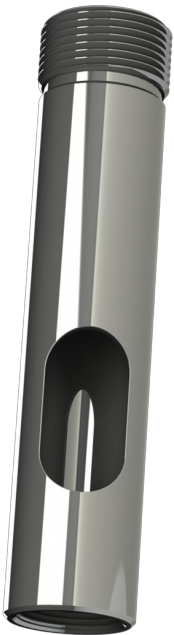
| | |
|-------------------|--|
| Color | Chrome |
| Length | 150 mm |
| Weight | 375 g |
| Diameter | Ø 31.5 mm |
| Mounting | On US-style brackets with 1"-14NF threaded stud |
| Materials | Solid chromed brass |
| For Antenna Types | All marine antennas with the G1"-11 Revolving Nut System |

ORDERING INFORMATION

| | |
|-----------|---------------------------------|
| 10000-420 | Bulk packing |
| 10000-421 | Individually packing in Polybag |

PACKAGING INFORMATION

| | |
|--------|--|
| Type | Bulk packing or individually packing in Polybag or Carton tube (See "ORDERING INFORMATION") |
| weight | Approx. 400 g |



Datasheet

2 / 2

