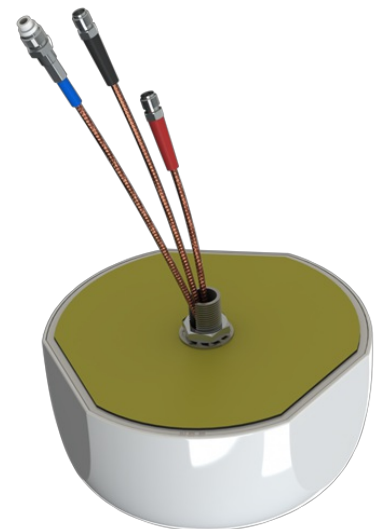
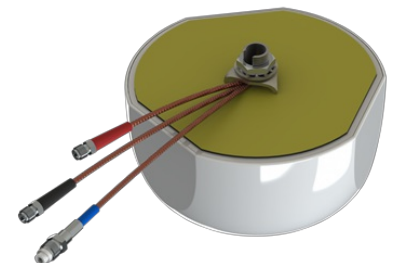


# Commutr®

## Compact Multiband 2G/3G/4G/IoT/GNSS Mobile Antenna

Full omni-directional multiband antenna for through-hole roof mounting. Especially made for demanding mobile communication applications on trucks and buses.

- 10 BANDS IN ONE INSTALLATION (LTE/GSM/UMTS/WLAN/GNSS)
- LOW PROFILE DESIGN
- ACTIVE GNSS ANTENNA
- WiFi-6E AND WiFi-7 COMPATIBLE
- WIDE RANGE OF EXTENSION CABLES AVAILABLE (NOT INCLUDED)



## ELECTRICAL SPECIFICATIONS

Frequency	790 - 869 MHz, 824 - 894 MHz, 890 - 960 MHz, 1710 - 1880 MHz, 1850 - 1990 MHz, 1850 - 2170 MHz, 2412 - 2484 MHz, 2500 - 2690 MHz, 4915 - 7125 MHz, 1561.1 - 1605.4 MHz
Bandwidth	See "FREQUENCY"
Impedance	50 Ohm
VSWR	< 2.5 (790-960 MHz), < 2.0 (1710-2170), < 2.5 (2500-2690 MHz)
Satellite System	GLONASS, GPS, Galileo and BeiDou
Polarisation	Linear
Gain	0 dBd, 2.15 dBi
Max. Input Power	3 W (LTE/GSM/UMTS/WLAN)
LNA Gain	26 dB (GNSS)
Noise Figure	1.35 dB (GNSS)
Supply voltage	3 - 5.5 V DC (Fed via cable) (GNSS)
Current consumption, average	20 mA

## Datasheet

2 / 3

## MECHANICAL SPECIFICATIONS

Color	Glossy White
Weight	175 g
Diameter	124 mm
Mounting	Bolt-on with adhesive tape for effective sealing
Mounting Place	On horizontal surface (conductive or non-conductive)
Height above roof	61.5 mm
Mounting hole	Ø 13 - 20 mm
Build-in Depth	Approx. 17 mm
Materials	ASA, PCB, PE, copper, brass and stainless steel.
Operating Temperature	-40°C to +85°C
Connector	LTE/GSM/UMTS: SMA-female (Red coding on cable)
Connector2	WLAN: SMA-female (Black coding on cable)
Connector3	GNSS: FME-female (Blue coding on cable)
Cable	0.2 - 0.3 m fixed to the antenna (Extension cables not supplied - please order separately)
Ingress protection	IP66

## ORDERING INFORMATION

48003-000	Antenna only
48003-001	Antenna only - Packed in polybag
48003-021	Antenna + 3 x 3m adapter cables in polybag
48003-041	Antenna + 3 x 5m adapter cables in polybag

## PACKAGING INFORMATION

Type	Polybag or bulk (See "Ordering Information")
size	150 x 150 x 150 mm
weight	Approx. 0.2 kg

